

## APPARTAMENTO / APARTMENT: **AIARNOLA**

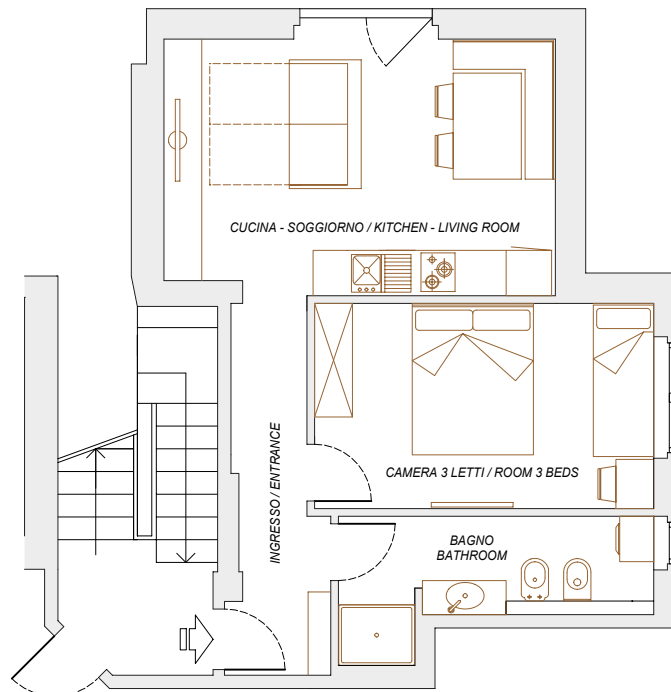
POSIZIONE / LOCATION: VIA MILANO, n. 3 - PADOLA (BL)

POSTI LETTO / BEDS: **3+2**

PIANO TERRA / GROUND FLOOR

SUPERFICIE COMMERCIALE / COMMERCIAL AREA: 52 mq

SUPERFICIE CALPESTABILE / FLOOR AREA: 42 mq



### SERVIZI / SERVICES:



LAVATRICE / WASHING MACHINE



LAVASTOVIGLIE / DISHWASHER



FORNO ELETTRICO + MICROONDE / ELECTRIC OVEN + MICROWAVE



2 TV / 2 TV SAT ASTRA HOTBIRD



CASSAFORTE / SAFE



RISCALDAMENTO A TERMOSIFONI / RADIATORS



CAMINETTO / BARBECUE



WIFI GRATUITO / FREE WIFI



DEPOSITO SCI CON ASCIUGA SCARPONI / SKI DEPOT WITH BOOT DRYER



GIARDINO PRIVATO / PRIVATE GARDEN



GIOCHI / PLAYGROUND



1 POSTO AUTO RISERVATO / 1 RESERVED PARKING SPACE



150m DALLE PISTE DA SCI / 150m FROM SKI SLOPES



VICINO FERMATA AUTOBUS / NEAR BUS STOP